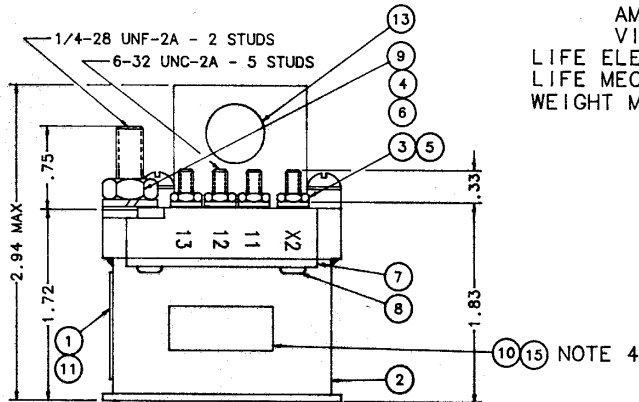
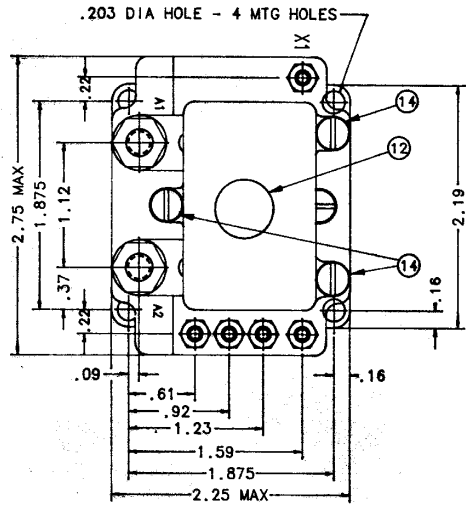


REVISONS		RELEASED	
REV	DESCRIPTION	DATE	APPROVED
K	31478 ADDED NOTE 4	96/11/13	RS

### FAA-PMA



**NOTES:**

- 1.) THIS UNIT MEETS THE MATERIAL AND WORKMANSHIP REQUIREMENTS OF MIL-R-6106.
- 2.) TERMINALS A1 AND A2 ARE STAINLESS STEEL. AUXILIARY AND COIL TERMINALS ARE BRASS. ALL TERMINALS AND TERMINAL HARDWARE ARE SILVER PLATED.
- 3.) RELAY BODY CONSTRUCTED OF MAGNETIC IRON AND PAINTED WITH BLACK LAQUER. TERMINAL INSULATION MATERIAL IS MINERAL GLASS POLYESTER.
- 4.) FAA/PMA PLATE (AND OVERLAY) NOT REQUIRED ON UNITS SUPPLIED TO ORIGINAL EQUIPMENT MANUFACTURERS.

**CONSTRUCTION**

MAIN CONTACTS  
CONFIGURATION  
VOLTAGE (NOM.)  
CURRENT RES.

AUXILIARY CONTACTS  
CONFIGURATION  
VOLTAGE  
CURRENT RES.

**COIL DATA**

MAX OPERATE  
MIN OPERATE  
PICKUP AT 25°C  
DROPOUT  
RES AT 25°C  
DUTY CYCLE

**ENVIRONMENTAL DATA**

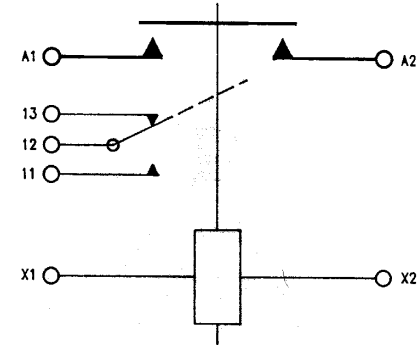
AMBIENT TEMP  
VIBRATION  
LIFE ELECTRICAL  
LIFE MECHANICAL  
WEIGHT MAX (EST)

GASKET SEALED, SILASTIC SEALED

SPST N.O.  
28 VDC  
100 AMP

SPDT  
28 VDC  
5 A

32 VDC  
24 VDC  
16.5 V MAX.  
1 TO 7 VDC  
70 OHM ±20%  
CONTINUOUS



15	1	39529-024	OVERLAY - FAA/PMA		
14	AR	54102-001	GLYPTOL		
13	4	57200-032	BLACK VINYL MARKING #407ZV		
12	1	57200-038	BLACK VINYL MARKING #411ZV		
11	1	39529-055	OVERLAY - NAME PLATE		
10	1	58400-001	PLATE - FAA/PMA		
9	2	51703-064	WASHER 1/2x17/64x.032		BRASS
8	4	51200-020	SCREW, PAN HD No.4 x 1/4	SHEETMETAL	S.S.
7	2	34290-001	PLATE - COVER		
6	2	51807-034	WASHER, LOCK 1/4 SPLIT		BRONZE
5	5	51806-014	WASHER, LOCK No.6 SPLIT		BRONZE
4	2	50407-364	NUT, HEX 1/4-20x7/16x3/16		BRASS
3	5	50406-014	NUT, HEX 6-32x3/16x5/64		BRASS
2	1	36281-010	CONTACTOR ASSEMBLY-PRIMARY		
1	1	41695-001	PLATE - NAME		

FIND NO	QTY RECD	PART OR IDENTIFYING NO	NOMENCLATURE OR DESCRIPTION	DRAWING OR SPECIFICATION	MATERIAL OR NOTE
UNLESS OTHERWISE SPECIFIED DIMENSIONS ARE IN INCHES TOLERANCES ON			<b>CMM</b>	HARTMAN ELECTRICAL MANUFACTURING MANSFIELD, OHIO	
2 PL DEC.13 PL DEC.1 ANGLES					
*.06 *.010 *1*			DR BY RLS 96/10/28	CONTACTOR - S.P.S.T. N.O. 100 AMP, 28 VDC	
MATERIAL			CHK BY RS 7/6/13		
			ENGR DM 9/2/11/13	093	
			MFG [Signature] 9/4/14		
			RELEASE [Signature]	SIZE C	CODE IDENT 74063
			CONTR NO.	DWG NO. A-1077DD	
			GOVT APPVL	SCALE NONE	SHEET